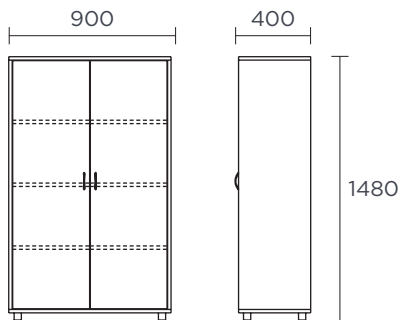


## Tall cabinet with interior shelves and doors

ASA405



ud/caja



kg

### Description

1480 mm tall cabinet with two doors and three evenly distributed shelves offers organized storage for various items. Its practical and functional design makes it ideal for all types of spaces.

### Components

Sides, base, top, and shelves:

- 19 mm thick particleboard with 2 mm PVC edging and decorative laminate surfaces.

Back panel:

- 10 mm thick particleboard with decorative laminate surface.

Feet:

- 40 mm high PVC.

### Main features

- Dismountable.
- Maximum safety shelf supports. Fastening with cams.
- Easy and quick assembly.
- Adjustable leveling feet.
- Back panel that provides greater rigidity and stability to the unit.
- Rounded edges.

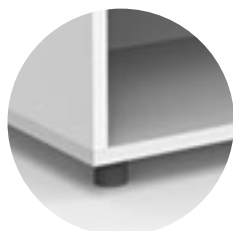
info@federicoginer.com

**FEDERICO GINER**

federicoginer.com

## Details and options

Legs



Handle



## Finishes

Body



Oak



White

Doors



Oak



White



Storm  
Grey



Pastel  
Grey



Nude



Paprika



Bambus



Frozen  
Blue

## Maintenance

- Check the joints between parts.
- Check the condition of the legs.
- Check the condition of the shelves to ensure there are no breaks and/or cracks, and inspect their side fixings.

## Cleaning

- Remove dust with a dry cloth or brush. Clean with a sponge or cloth using neutral soap or a mixture of water and vinegar. For embedded dirt, grease, or stains, ammonia can be used.