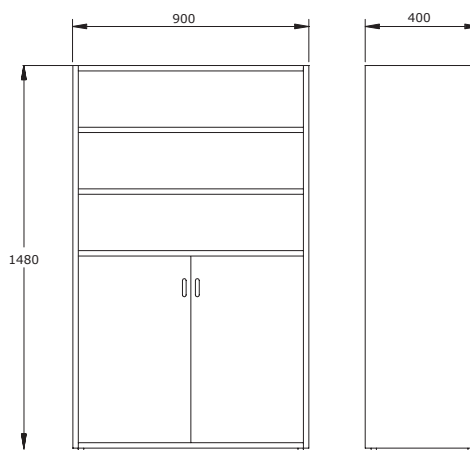


## Tall cabinet with upper shelves and doors

ASA407



ud/caja



kg

### Description

1470 mm tall cabinet with two lower doors, three upper shelves, and two internal ones offers organized storage for various items. Its practical and functional design makes it ideal for all types of spaces.

### Components

Sides, base, top, and shelves:

- 19 mm thick particleboard with 2 mm PVC edging and decorative laminate surfaces.

Back panel:

- 10 mm thick particleboard with decorative laminate surface.

Feet:

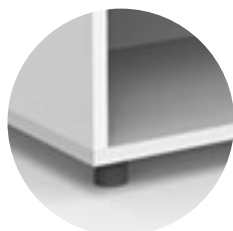
- 40 mm high PVC.

### Main features

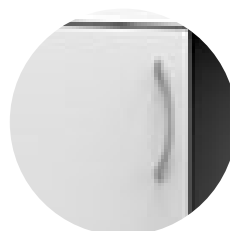
- Dismountable.
- Maximum safety shelf supports. Fastening with cams.
- Easy and quick assembly.
- Adjustable leveling feet.
- Back panel that provides greater rigidity and stability to the unit.
- Rounded edges.

## Details and options

Legs



Handle



## Finishes

Body



Oak

White

Doors



Oak

White

Storm  
Grey

Pastel  
Grey

Nude

Paprika

Bambus

Frozen  
Blue

## Maintenance

- Check the joints between parts.
- Check the condition of the legs.
- Check the condition of the shelves to ensure there are no breaks and/or cracks, and inspect their side fixings.

## Cleaning

- Remove dust with a dry cloth or brush. Clean with a sponge or cloth using neutral soap or a mixture of water and vinegar. For embedded dirt, grease, or stains, ammonia can be used.