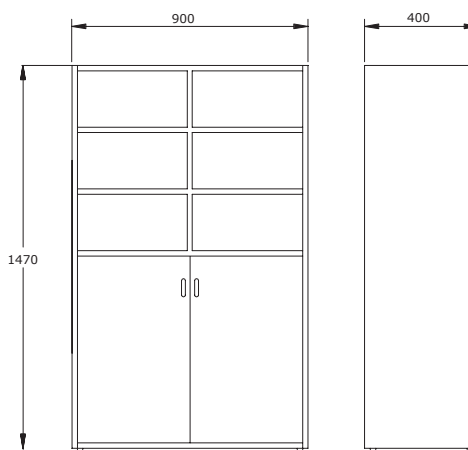


## Tall cabinet with upper compartments and doors

ASA409



ud/caja



kg

### Description

Cabinet with a height of 1470 mm, two lower doors, and upper compartments. It offers organized space for storing various items. Its practical and functional design is ideal for all types of spaces.

### Components

Sides, base, top, and shelves:

- 19 mm thick particleboard with 2 mm PVC edging and decorative laminate surfaces.

Back panel:

- 10 mm thick particleboard with decorative laminate surface.

Feet:

- 40 mm high PVC.

### Main features

- Dismountable.
- Maximum safety shelf supports. Fastening with cams.
- Easy and quick assembly.
- Adjustable leveling feet.
- Back panel that provides greater rigidity and stability to the unit.
- Rounded edges.

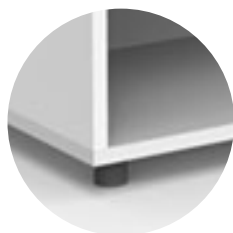
info@federicoginer.com

**FEDERICO GINER**

federicoginer.com

## Details and options

Legs



Handle



## Finishes

Body



Oak

White

Doors



Oak

White

Storm  
Grey

Pastel  
Grey

Nude

Paprika

Bambus

Frozen  
Blue

## Maintenance

- Check the joints between parts.
- Check the condition of the legs.
- Check the condition of the shelves to ensure there are no breaks and/or cracks, and inspect their side fixings.

## Cleaning

- Remove dust with a dry cloth or brush. Clean with a sponge or cloth using neutral soap or a mixture of water and vinegar. For embedded dirt, grease, or stains, ammonia can be used.