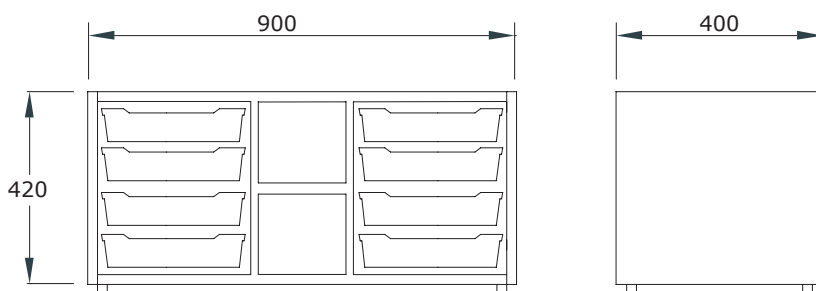
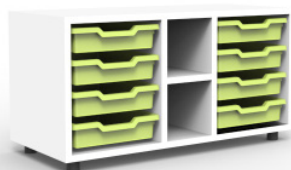


Ultra-low cabinet with central shelves and drawers

ASB104



ud/caja



kg

Description

Ultra-low cabinet with central shelves. It offers organized storage space, along with the drawers. Its practical and functional design is ideal for all types of spaces.

Components

Sides, base, top, and shelves:

- 19 mm thick particleboard with 2 mm PVC edging and decorative laminate surfaces.

Back panel:

- 10 mm thick particleboard with decorative laminate surface.

Feet:

- 40 mm high PVC.

Main features

- Dismountable.
- Easy and quick assembly.
- Adjustable leveling feet.
- Back panel provides increased rigidity and stability.
- Rounded edges.
- Drawer space designed to combine large and small drawers.

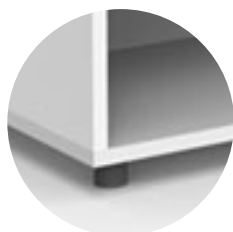
info@federicoginer.com

FEDERICO GINER

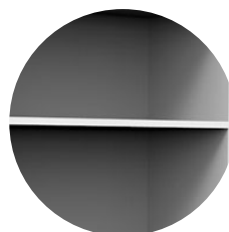
federicoginer.com

Details and options

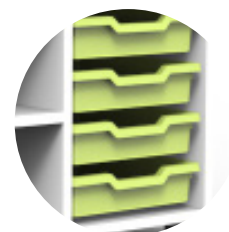
Legs



Shelf



Drawers



Finishes

Body



Drawers



Maintenance

- Check the joints between parts.
- Check the condition of the legs.
- Check the condition of the shelves to ensure there are no breaks and/or cracks, and check their side brackets.
- Check the condition of the drawers.

Cleaning

- Remove dust with a dry cloth or brush. Clean with a sponge or cloth using neutral soap or a mixture of water and vinegar. For embedded dirt, grease, or stains, ammonia can be used.