

ud/caja



kg

Description

770 mm high cabinet with two evenly spaced shelves, offering organized storage for various items. Its practical and functional design makes it ideal for all types of spaces.

Components

Sides, base, top, and shelves:

- 19 mm thick particleboard with 2 mm PVC edging and decorative laminate surfaces.

Back:

- 10 mm thick particleboard with decorative laminate surface.

Legs:

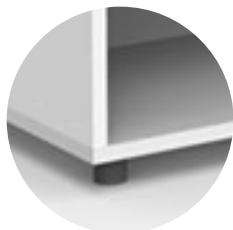
- 40 mm high PVC.

Main features

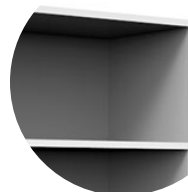
- Detachable.
- Shelves supported with maximum safety. Fixed by eccentric connectors.
- Easy and quick assembly.
- Leveling feet.
- Back panel provides increased rigidity and stability to the furniture.
- Rounded edges.

Details and options

Legs



Shelf



Finishes



Oak



White

Maintenance

- Check the joints between parts.
- Check the condition of the legs.
- Inspect the shelves to ensure there are no cracks or breaks, and verify the side fastenings.

Cleaning

- Remove dust with a dry cloth or brush. Clean with a sponge or cloth using neutral soap or a mixture of water and vinegar. For embedded dirt, grease, or stains, ammonia can be used.