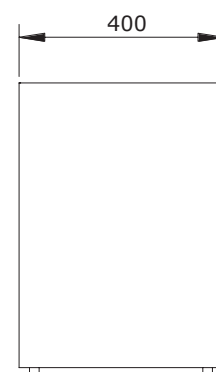
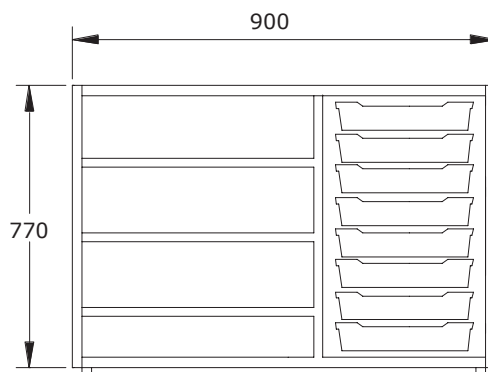


Low cabinet with side shelves and drawers

ASM205



ud/caja



kg

Description

770 mm high cabinet with side shelves. It offers organized storage for various items, along with the drawers. Its practical and functional design makes it ideal for all types of spaces.

Components

Sides, base, top, and shelves:

- 19 mm thick particleboard with 2 mm PVC edging and decorative laminate surfaces.

Back panel:

- 10 mm thick particleboard with decorative laminate surface.

Feet:

- 40 mm high PVC.

Main features

- Dismountable.
- Easy and quick assembly.
- Adjustable leveling feet.
- Back panel provides increased rigidity and stability.
- Rounded edges.
- Drawer space designed to combine large and small drawers.

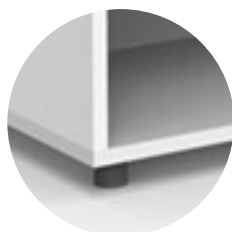
info@federicoginer.com

FEDERICO GINER

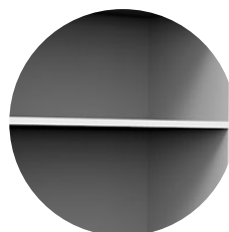
federicoginer.com

Details and options

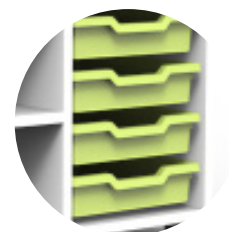
Legs



Shelf



Drawers



Finishes

Body



Oak



White

Drawers



Powder Blue



Sand



Ash Grey



Translucent



Flame Red



Grass Green



Charcoal Grey



Lime Tray

Maintenance

- Check the joints between parts.
- Check the condition of the legs.
- Check the condition of the shelves to ensure there are no breaks and/or cracks, and check their side brackets.
- Check the condition of the drawers.

Cleaning

- Remove dust with a dry cloth or brush. Clean with a sponge or cloth using neutral soap or a mixture of water and vinegar. For embedded dirt, grease, or stains, ammonia can be used.