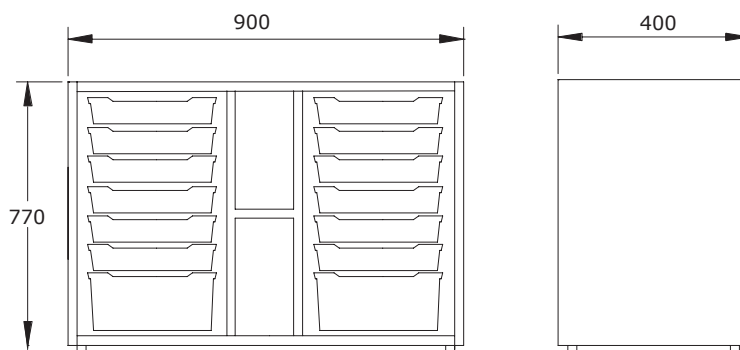
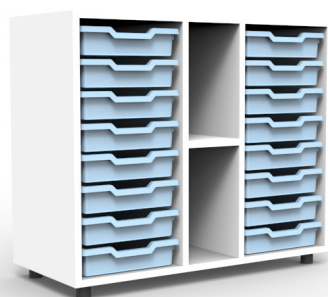


# Low cabinet with central lockers and drawers

ASM206



ud/caja



kg

## Description

Low cabinet with evenly spaced central shelves, offering organized storage along with drawers. Its practical and functional design makes it ideal for all types of spaces.

## Components

Sides, base, top, and shelves:

- 19 mm thick particleboard with 2 mm PVC edging and decorative laminate surfaces.

Back panel:

- 10 mm thick particleboard with decorative laminate surface.

Feet:

- 40 mm high PVC.

## Main features

- Dismountable.
- Easy and quick assembly.
- Adjustable leveling feet.
- Back panel provides increased rigidity and stability.
- Rounded edges.
- Drawer space designed to combine large and small drawers.

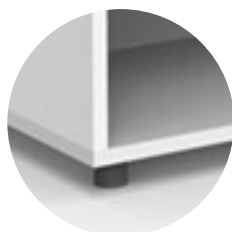
info@federicoginer.com

**FEDERICO GINER**

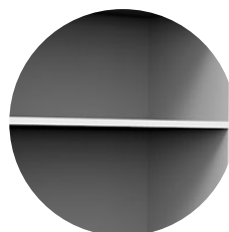
federicoginer.com

## Details and options

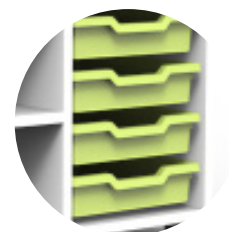
Legs



Shelf



Drawers



## Finishes

Body



Drawers



## Maintenance

- Check the joints between parts.
- Check the condition of the legs.
- Check the condition of the shelves to ensure there are no breaks and/or cracks, and check their side brackets.

## Cleaning

- Remove dust with a dry cloth or brush. Clean with a sponge or cloth using neutral soap or a mixture of water and vinegar. For embedded dirt, grease, or stains, ammonia can be used.