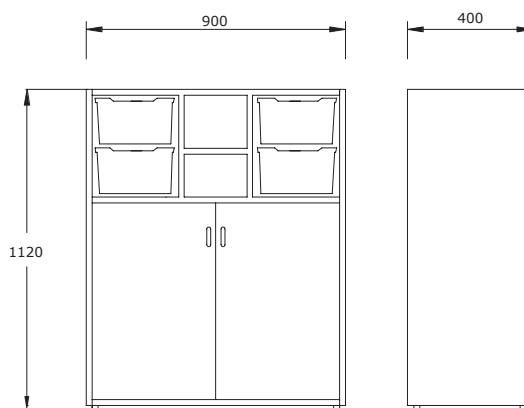


## Intermediate cabinet with central shelves, doors, and drawers

ASN313



ud/caja



kg

### Description

Cabinet with a height of 1120 mm, two doors, and central shelves, offering organized storage for various items along with drawers. Its practical and functional design makes it ideal for all types of spaces.

### Components

Sides, base, top, and shelves:

- 19 mm thick particleboard with 2 mm PVC edging and decorative laminate surfaces.

Back panel:

- 10 mm thick particleboard with decorative laminate surface.

Feet:

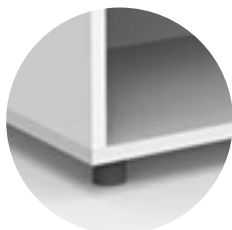
- 40 mm high PVC.

### Main features

- Dismountable.
- Maximum safety shelf supports. Fastening with cams.
- Easy and quick assembly.
- Adjustable leveling feet.
- Back panel that provides greater rigidity and stability to the unit.
- Rounded edges.

## Details and options

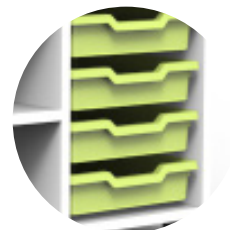
Legs



Handle



Drawers



## Finishes

Body



Doors



Drawers



## Maintenance

- Check the joints between parts.
- Check the condition of the legs.
- Check the condition of the shelves to ensure there are no breaks and/or cracks, and inspect their side fixings.

## Cleaning

- Remove dust with a dry cloth or brush. Clean with a sponge or cloth using neutral soap or a mixture of water and vinegar. For embedded dirt, grease, or stains, ammonia can be used.