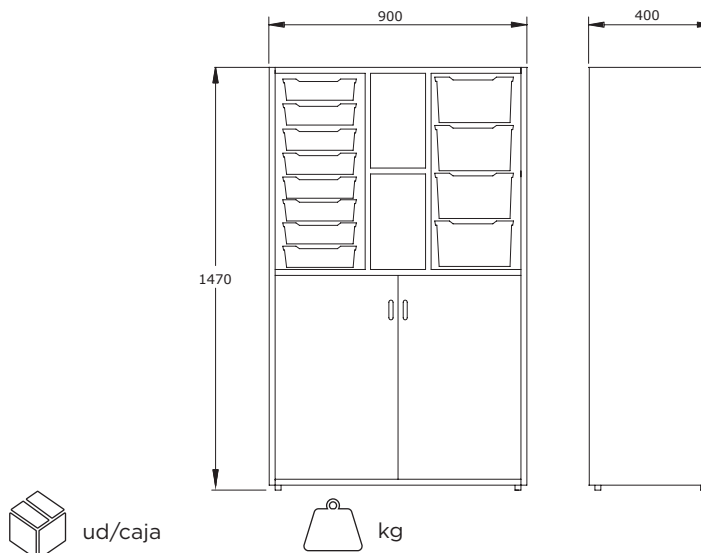


## Cabinet with central shelves, lower doors, and drawers

ASA410



### Description

Cabinet with a height of 1470 mm, two doors, and central shelves, offering organized space for storing various items, along with drawers. Its practical and functional design is ideal for all types of spaces.

### Components

Sides, base, top, and shelves:

- 19 mm thick particleboard with 2 mm PVC edging and decorative laminate surfaces.

Back panel:

- 10 mm thick particleboard with decorative laminate surface.

Feet:

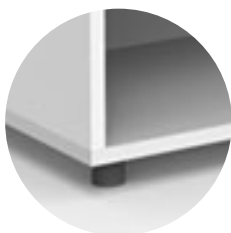
- 40 mm high PVC.

### Main features

- Dismountable.
- Maximum safety shelf supports. Fastening with cams.
- Easy and quick assembly.
- Adjustable leveling feet.
- Back panel that provides greater rigidity and stability to the unit.
- Rounded edges.

## Details and options

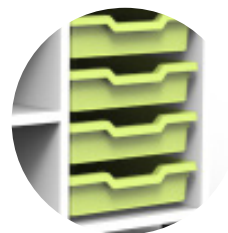
Legs



Handle



Drawers



## Finishes

Body



Oak

White

Doors



Oak

White

Storm  
Grey

Bambus

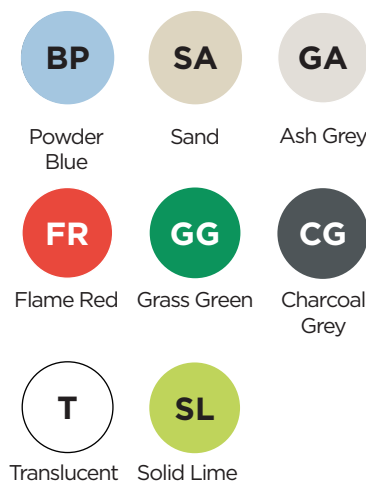
Frozen  
Blue

Pastel  
Grey

Nude

Paprika

Drawers



Powder  
Blue

Sand

Ash Grey

Flame Red

Grass Green

Charcoal  
Grey

Translucent

Solid Lime

## Maintenance

- Check the joints between parts.
- Check the condition of the legs.
- Check the condition of the shelves to ensure there are no breaks and/or cracks, and inspect their side fixings.

## Cleaning

- Remove dust with a dry cloth or brush. Clean with a sponge or cloth using neutral soap or a mixture of water and vinegar. For embedded dirt, grease, or stains, ammonia can be used.