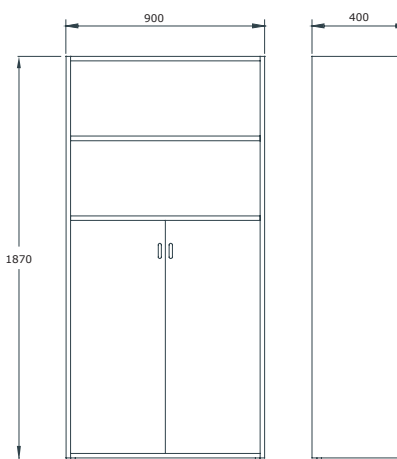


Extra-tall cabinet with upper shelves and doors

ASS503



ud/caja



kg

Description

Cabinet with a height of 1870 mm, two lower doors, and upper and internal shelves offers an organized space for storing various items. Its practical and functional design makes it ideal for all types of spaces.

Components

Sides, base, top, and shelves:

- 19 mm thick particleboard with 2 mm PVC edging and decorative laminate surfaces.

Back panel:

- 10 mm thick particleboard with decorative laminate surface.

Feet:

- 40 mm high PVC.

Main features

- Dismountable.
- Maximum safety shelf supports. Fastening with cams.
- Easy and quick assembly.
- Adjustable leveling feet.
- Back panel that provides greater rigidity and stability to the unit.
- Rounded edges.

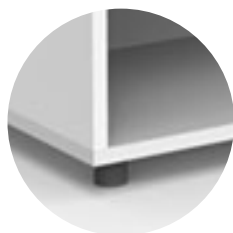
info@federicoginer.com

FEDERICO GINER

federicoginer.com

Details and options

Legs



Handle



Finishes

Body



Oak



White

Doors



Oak



White



Storm
Grey



Pastel
Grey



Nude



Paprika



Bambus



Frozen
Blue

Maintenance

- Check the joints between parts.
- Check the condition of the legs.
- Check the condition of the shelves to ensure there are no breaks and/or cracks, and inspect their side fixings.

Cleaning

- Remove dust with a dry cloth or brush. Clean with a sponge or cloth using neutral soap or a mixture of water and vinegar. For embedded dirt, grease, or stains, ammonia can be used.